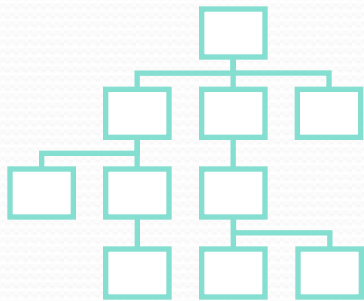


# Logical Framework Approach

## Secret to Success



- **Clear Objectives**
- **Strong Commitment**

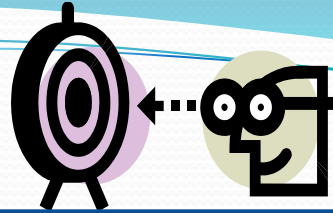
*One without the other is irrelevant*



**Objectives**



**Verifiable Indicators**



**Means Verification**



**Assumptions**



Target Group

**PURPOSE (IMPACT)**

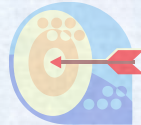


**Benefit**

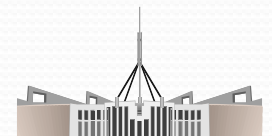
Q,  
q,  
t



**OUTPUTS (Deliverables)**



Q,q,t



**Manageable**

Q,q,t



Stakeholders

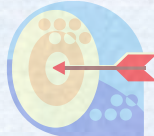


**Interest**

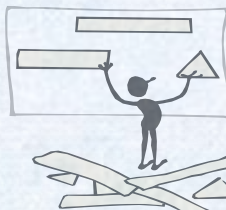
Q,q,t



Q,q,t



**Activities**



# The Logical Framework

A summary of:

- face-to-face agreements
- causal relationships
- management commitments
- benefits & costs

Narrative Summary	Objectively Verif. Indicators	Means of Verification	Assumptions & Risks
Goal			
Purpose			
Outputs			
Activities			

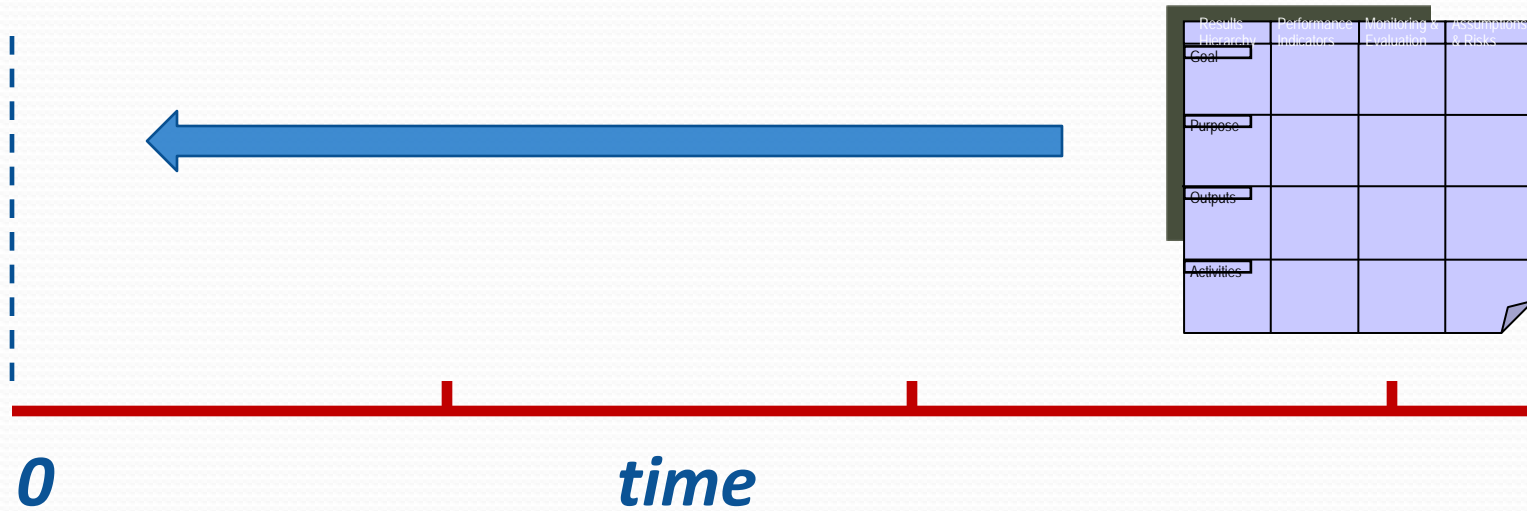
# A Strong Project Design

Log FRAME's strength arises from the logic that is inherent in its structure

Super Goal



# Backcasting



# Summary of Project/Program Design

## Objectives

- Clarity/Agreement
- Cause/effect
- Impact
- Deliverables

## Targets & Indicators


- Plausible
- Quantity, Quality & Time

## Relationship to Outside Factors

- Assumptions
- Risks
- Systems Integration

## Allocation of Management Responsibility

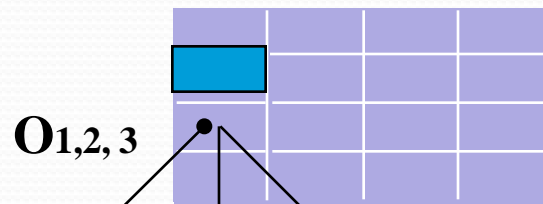
- Outputs & TOR
- M&R, E Systems



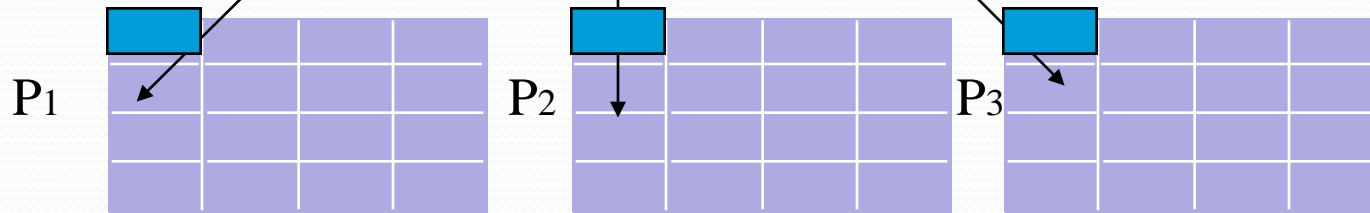
Results Hierarchy	Performance Indicators	Monitoring & Evaluation	Assumptions & Risks
Goal			
Purpose			
Outputs			
Activities			

# Aligning Strategy/Program/Project

Program Level



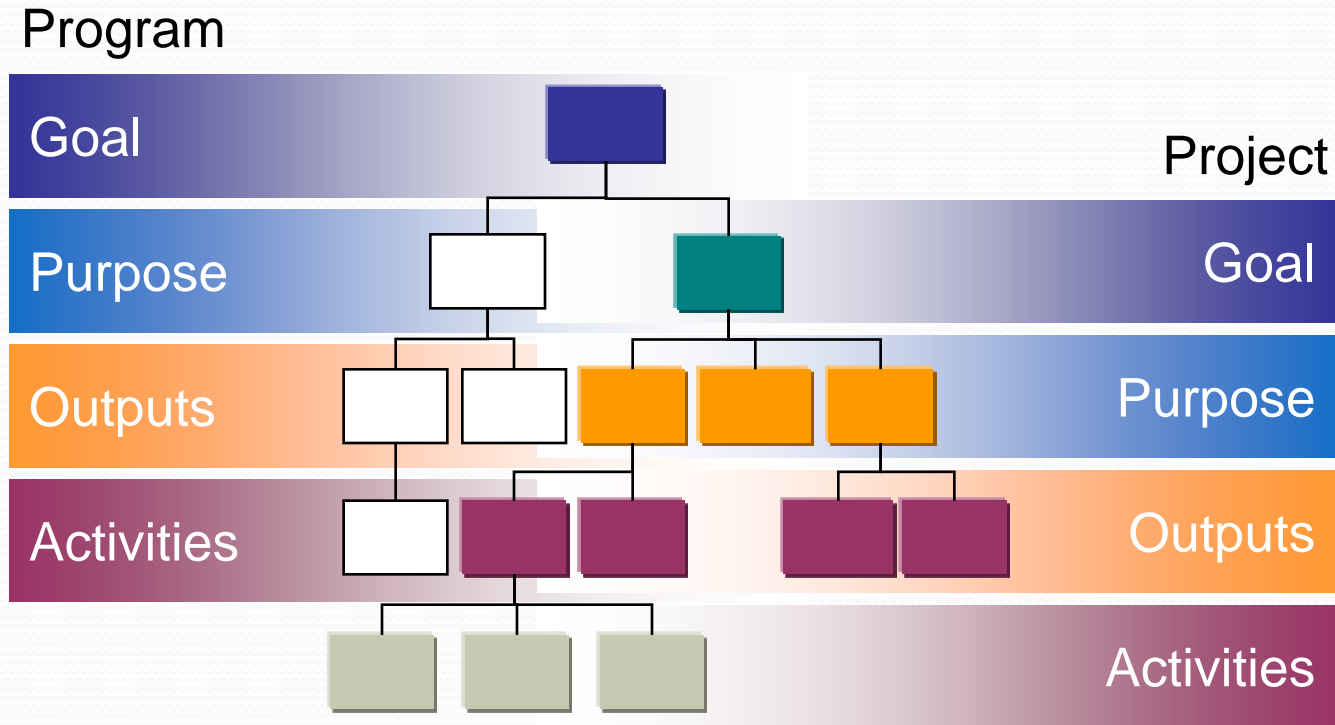
Project Level



A Program - an interrelated portfolio of projects sharing a common goal.  
The impact at the project level is the output of the program.



# Flexible Point-of-View

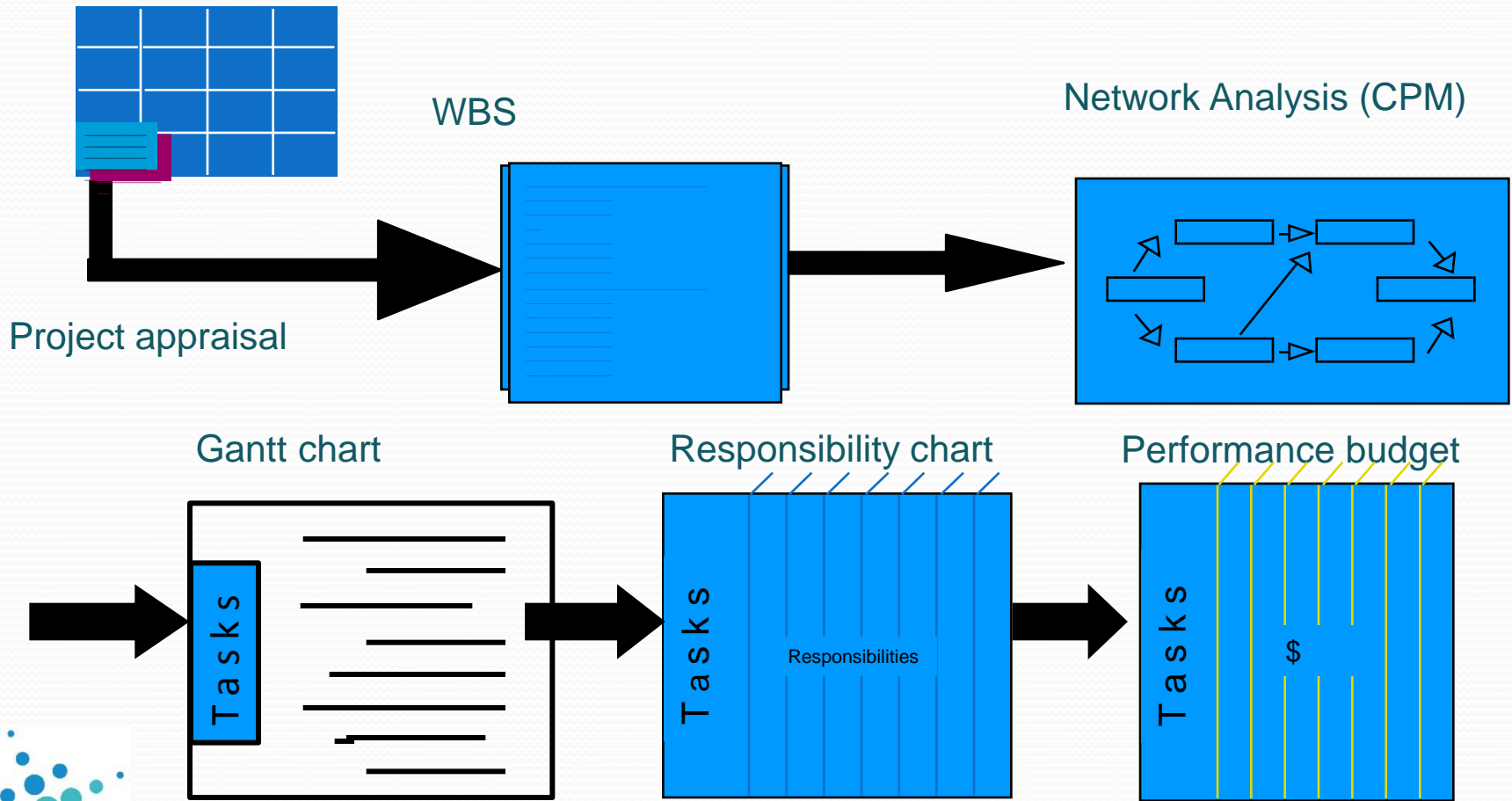


Goal, Purpose and Output change with point-of-view.



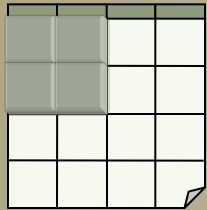
# Project Implementation

Use LogFRAME activities and tasks as the starting point for detailed (implementation) planning and management

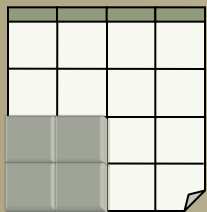


# Monitoring & Evaluation

## By Definition:



Evaluate: Purpose & Goal (Impact & Outcomes)  
**Are we doing the right project?**



Monitor: Project Outputs (Deliverables & Activities)  
**Are we doing the project right?**